



Royal Victoria Yacht Club presents

**SWIFTSURE 2024**  
INTERNATIONAL YACHT RACE



May 25-26, 2024  
[swiftsure.org](http://swiftsure.org)



# Safety Overview



**SWIFTSURE**



**Safety Communications**  
**The Swiftsure Race Courses**  
**The Start and Finish**  
**Safety Requirements**  
**Grid Map of Juan de Fuca Strait**  
**Deployment Schedule Race Morning**  
**JRCC Victoria Support**  
**Single Point of Contact for Swiftsure**

# Safety Communications

Race Event Chair

Principle Race Officer

Joint Rescue Coordination Centre Victoria

CCG Marine Communications and Traffic Services Victoria

Others:

RVYC Commodore

Western Canada Marine Response Corp Vessel G.M. Penman

RCM-SAR Units 33, 35, 37 (Oak Bay, Victoria, Sooke)



SWIFTSURE

---

# Swiftsure Race Courses

## **Swiftsure Lightship Classic – 138.2 nm**

Swiftsure Bank – NEW Lighted/Anchored Rounding Mark

## **Cape Flattery – 101.9 nm**

Neah Bay – G. M. Penman

## **Juan de Fuca – 75.2 nm**

Clallam Bay – Green navigational buoy

## **Swiftsure Inshore Races**

- course depends on wind race morning
- finish is in Cadboro Bay



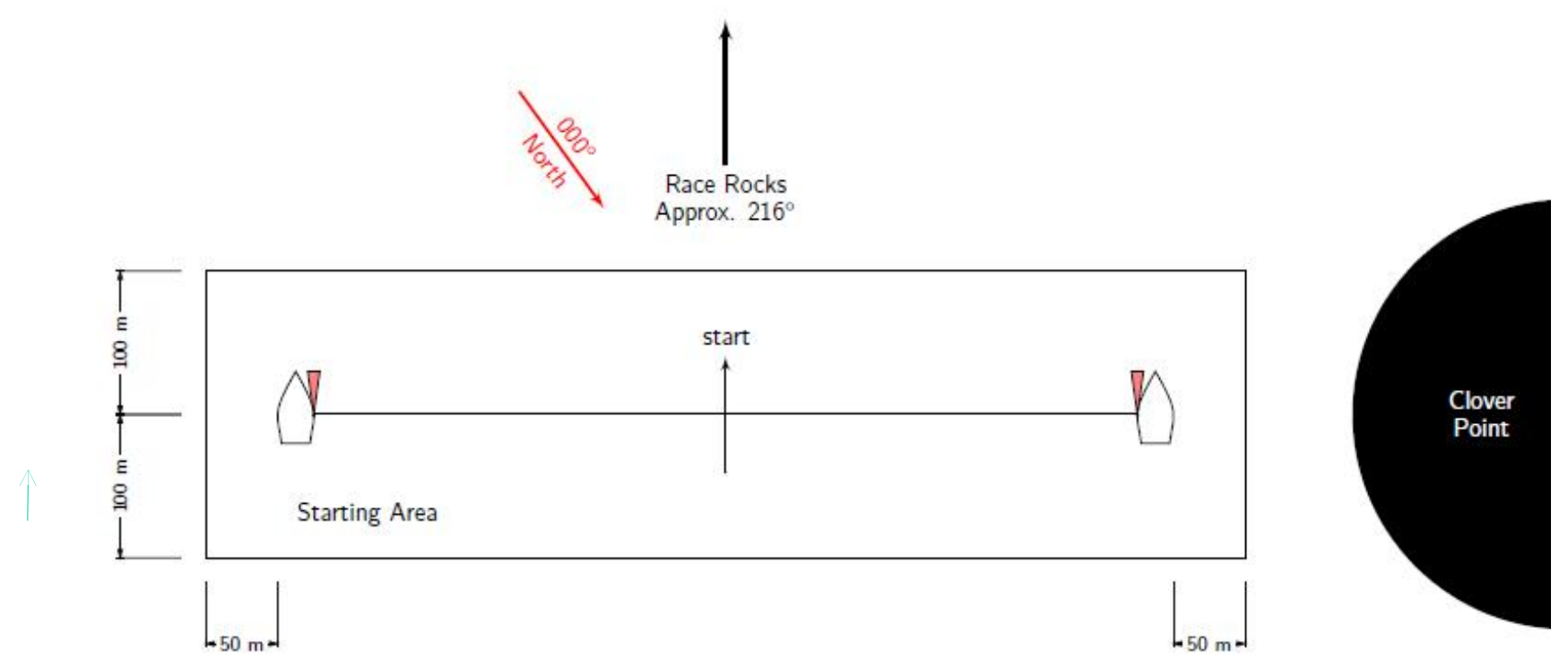
# 3 Long Race Courses

SWIFTSURE





# The Start Line





SWIFTSURE

# The Start



Hecate Sentinel - WCMRC



SWIFTSURE

---

# Authorized Vessels in Starting Area

- Sailboats in upcoming start
- Power boats:
  - Signal/Start Boat (port end) - MV Hecate Sentinel - orange flag
  - Pin Boat (stbd end/Clover Point)- Discovery Isle - orange flag
  - Mark/Marshall boat – RC flag
- Photographer Boats (pink flags)
  - Prince of Whales RHIB





# Coordination of Resources for Start

---

- **In case of COB**
  - JRCC Victoria coordinates the SAR
- **In case of major collision or injury**
  - RCMP on-scene commander
- **In case of errant spectator boat**
  - Race Committee Marshall
  - RCM-SAR RHIBs
  - RCMP (blue flashing light) issues orders



SWIFTSURE

# Swiftsure – Finish Line





SWIFTSURE

# Safety Requirements

---

- World Sailing Category 3 Offshore Special Regulations (in addition to requirements of government authorities)
  - Hull and structure (e.g., stability, strength of build)
  - Boat safety equipment
  - Personal safety equipment
  - Gear (e.g., second steering mechanism, safety diagram)
  - Practice COB procedures
  - Experienced crew, trained, fit to "handle bad weather"
  - Person in Charge responsible for safety of boat and crew
  - Designated crew to take over if Person in Charge incapacitated



# World Sailing Racing Rules of Sailing

SWIFTSURE

---

## Fundamental Rules:

#1.1 shall give all possible help to any person or vessel in danger

#1.2 shall carry adequate life-saving equipment for all persons on board

#4 Decision To Race: The responsibility for a boat's decision to participate in a race or to continue racing is hers alone.



# Swiftsure Safety Policy

SWIFTSURE

---

- Safety Considerations
  - Weather and Currents
  - Crew Lists
  - Communication with Fleet
  - Location of Commercial Vessels and Race Fleet
  - Minimum Safety Requirements
  - Search and Rescue Support
- Meteorological Monitoring Protocol
  - Cautionary Weather Protocol
  - Dangerous Weather Protocol
  - Race Abandonment
  - Wind and Sea Monitoring
  - Weather Reporting Stations



# Safety Instructions to Boats

SWIFTSURE

---

- Accurate crew lists
- SI Addendum B – Appendix RV Reduced Visibility Racing Rules
- SI Addendum C – Appendix TS – Traffic Separation Scheme
- Shall wear lifejackets with tethers sunset to sunrise, when winds are above 25 knots, if alone on deck, or visibility under 1 nautical mile
- PFD marked with wearer's or boat's name



# Safety Instructions to Boats

SWIFTSURE

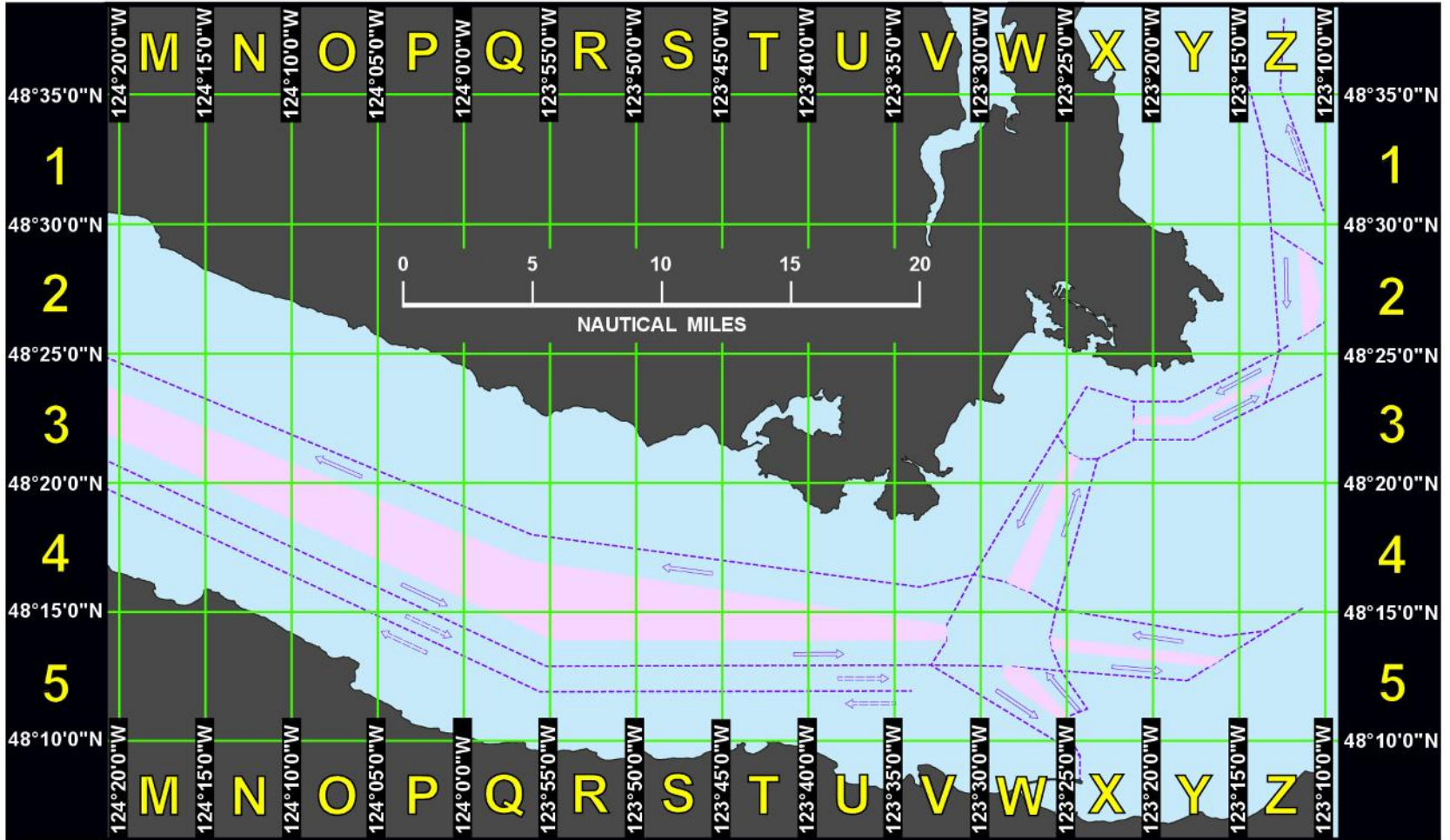
---

- Security zones for US Naval vessels & tankers
- In emergency call Coast Guard
- Use engine to avoid commercial traffic, to aid another vessel or crew, or for SAR activities
- CCG Marine Communication Traffic Services regular broadcast on VHF 09 for location, direction, & speed of commercial traffic
- Boats shall monitor VHF 16 at all times
- Post-race safety inspection



# Canadian Hydrographic Grid Map – Page 1

SWIFTSURE

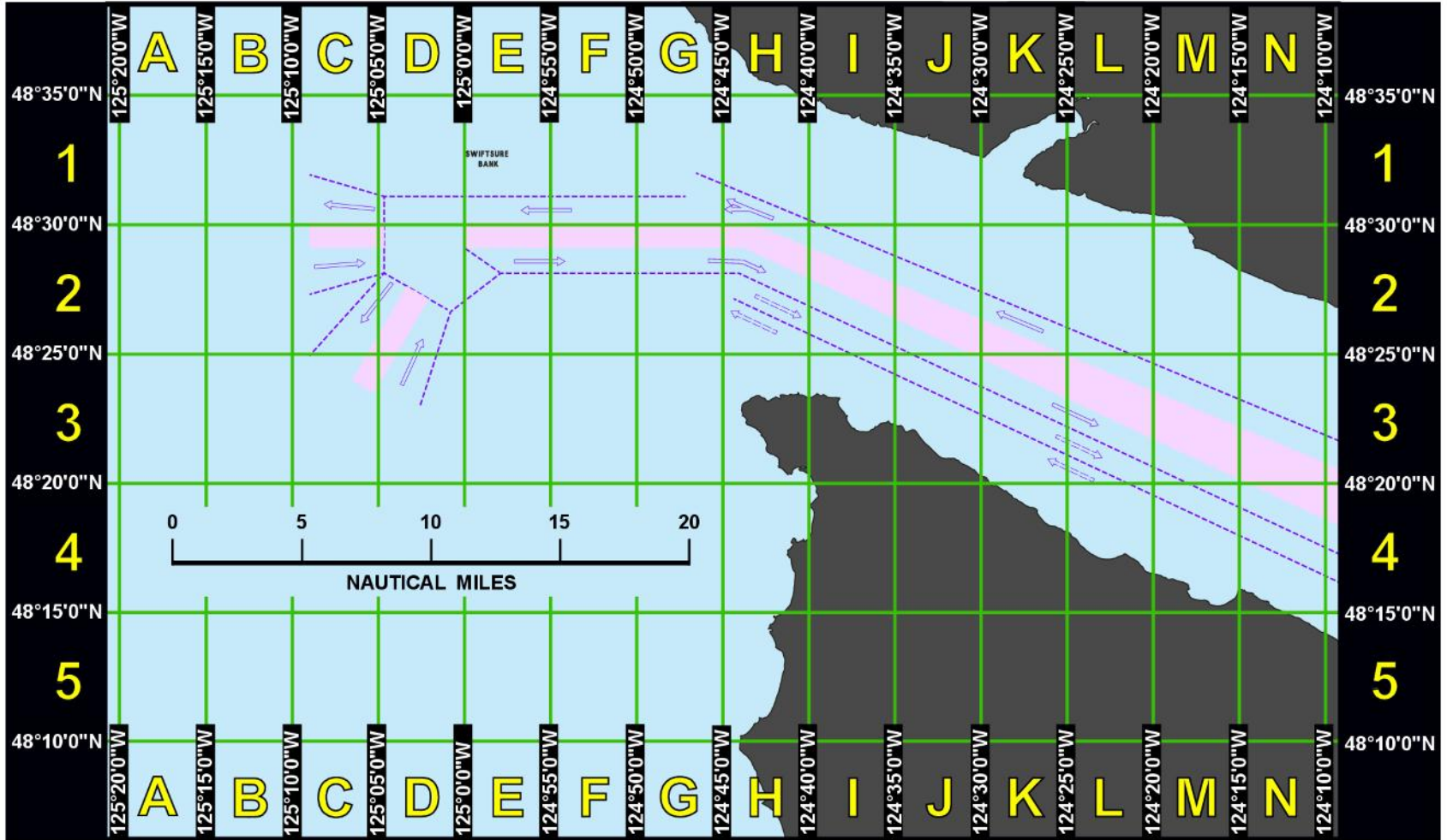






# Canadian Hydrographic Grid Map – Page 2

SWIFTSURE





# Deployment May 25



- 0800 race committee board Hecate Sentinel; depart 0815
- 0630 race committee board G.M. Penman; depart 0700, steam to Neah Bay rounding position
- 0845 Hecate Sentinel arrives in start area
- 0845 Discovery Isle arrives in start area
- 0900 RCMP and RCM-SAR vessels arrive in start area
- 0950 ten minute warning signal for first start
  - 10 minute sequence
  - 6 starts
  - ~1 minute between each sequence



## JRCC Victoria Support for Swiftsure

---

- JRCC Victoria's role in case of marine emergency
- JRCC Victoria's preparations for Swiftsure race
- Deployment of SAR resources



# Point of Contact During Race

SWIFTSURE

---

Swiftsure Communications at HQ

- Single point of contact
- Will triage all calls as a priority
- **Race Committee 250.858.3965**

Paul Longridge, Race Director, M: 250.889.0314

Kirk Palmer, Race Event Chair, M: 250.514.1542

Dugald Smith, Principal Race Officer, M: 250.661.5420



# Race Tracker During Race

SWIFTSURE

## Kwindoo LiveView for PC – Swiftsure's public race tracker

KWINDOO



- select 'Events' at <https://kwindoo.com/>, enter event as 'Swiftsure',
- select Swiftsure 2024 International Yacht Race

### Select one race course at a time:

- Swiftsure Lightship Classic:
  - [https://kwindoo.com/tracking/37474-swiftsure-2024-international-yacht-race?race\\_id=44440](https://kwindoo.com/tracking/37474-swiftsure-2024-international-yacht-race?race_id=44440)
- Cape Flattery Race:
  - [https://kwindoo.com/tracking/37474-swiftsure-2024-international-yacht-race?race\\_id=44443](https://kwindoo.com/tracking/37474-swiftsure-2024-international-yacht-race?race_id=44443)
- Juan de Fuca Race for Multihulls:
  - [https://kwindoo.com/tracking/37474-swiftsure-2024-international-yacht-race?race\\_id=44441](https://kwindoo.com/tracking/37474-swiftsure-2024-international-yacht-race?race_id=44441)
- Juan de Fuca Race for Monohulls:
  - [https://kwindoo.com/tracking/37474-swiftsure-2024-international-yacht-race?race\\_id=44443](https://kwindoo.com/tracking/37474-swiftsure-2024-international-yacht-race?race_id=44443)



# Some Stats

---

## 79th running of Swiftsure

Number of Boats at close of registration:

Swiftsure Bank		9
Cape Flattery (ORC 39 & PHRF 25)		64
Juan de Fuca Multihulls		7
Juan de Fuca Monohulls		33
Subtotal	113	
Inshore Race Divisions	17	
<b>TOTAL</b>		<b>130</b>

About 100 volunteers

Generous support by sponsors



Royal Victoria Yacht Club presents

# SWIFTSURE 2024

INTERNATIONAL YACHT RACE



May 25-26, 2024  
[swiftsure.org](http://swiftsure.org)



Comments/feedback?  
[chair@swiftsure.org](mailto:chair@swiftsure.org)